

OptiStar® Elite

MR CONTRAST DELIVERY SYSTEM



A simple and efficient MRI injector
with reliable performances



The OptiStar® Elite is a dual-head contrast delivery system, meeting the needs of healthcare professionals in the MRI room.



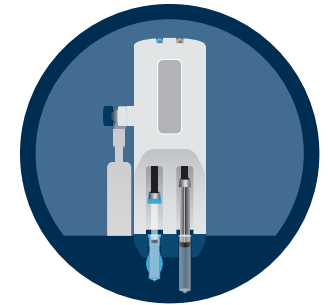
Pressure Limit:
200PSI

Up to 3 Tesla
Compatibility

Inject Delay:
0 to 300seconds

SIMPLE, EFFICIENT, RELIABLE...
the OptiStar® Elite will allow you to perform MRI exams in an optimized way with specifically designed features.

Thanks to its ultrasonic motor, the OptiStar® Elite is nonmagnetic and is compatible with up to 3 Tesla scanners.



EFFICIENT & RELIABLE

PFS compatible
Fully Prepare syringes outside the MRI room
Battery-free: eliminate associated time & cost



SIMPLE TO USE

Auto retract rams for quick turnaround
Powerhead keys:
Control at your fingertips & full access from inside the MRI room



THE 3 CONFIGURATIONS:

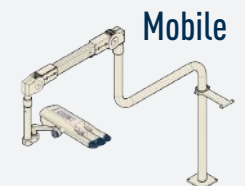
For your preferences and needs:



Pedestal



Ceiling mount



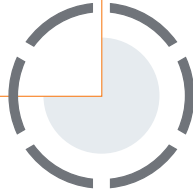
Mobile

Designed to be simple and easy to use, the console allows you to manage the injection with a total remote control

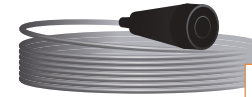
START & STOP AN INJECTION REMOTELY



UP TO 6 PHASES IN PROTOCOL

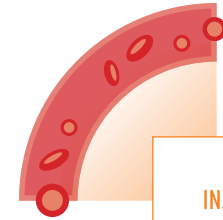


PRESSURE CONTROL



Handswitch for maximum flexibility

CAN STORE UP TO 40 PROTOCOLS IN MEMORY



INJECTION FEATURES:

Patency Check®:
test the patient's vein prior the injection

Timing Bolus®:
test to determine the optimal scan delay

Drip mode:
maintaining the venous access



Colour touchscreen, uncluttered display



Console Enable
(minimize delays & maximize control)



Clear indicators & status line



Our digital solution to collect, archive, analyse and share patient injection data and injector activity



TRACEABILITY

Facilitate traceability and save administration time



INFORMED DECISIONS

A complete view on all relevant patient information including injection history



ANALYTICS

Improve your injection practices and optimize contrast media utilization

For more information ask your Guerbet Representative

The 360° Technical support you can rely on



THE 3 SERVICE PACKAGES:

P

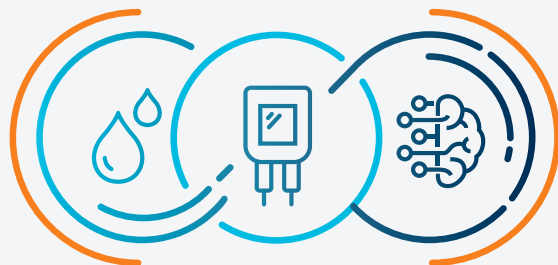
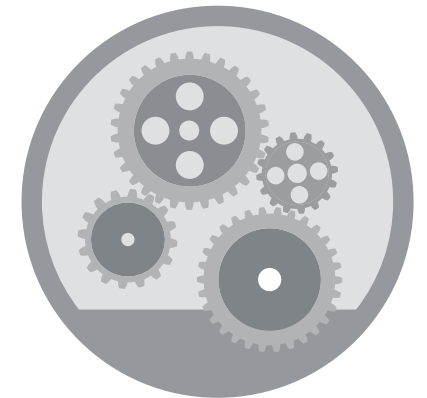
PLATINUM

G

GOLD

S

SILVER



UNIK

Tailored interconnected solutions driving your journey to excellence

UNIK is a flexible solution, tailored to your specific needs and challenges, designed to add value at each step of the patient healthcare journey, interconnecting our comprehensive portfolio of products, solutions and services in diagnostic imaging.

SYRINGE KIT

MULTIPAK-OPTISTAR

Dual MRI 60ml Syringe with single check valve Y-tubing and filling spikes

Single Use
Pressure limit:
300 PSI



TUBINGS

Single check valve

Y-tubing 150cm
Pressure Limit:
200 PSI



Y-tubing 230cm
Pressure Limit:
350 PSI



SINGLE SYRINGE KIT

Single MRI 60ml Syringe with filling spike

Single Use
Pressure limit:
300 PSI



CONTRAST MEDIA ADAPTERS

10,15,20 ml

DotaClip
For Contrast Agent
Glass Syringe



StarClip
For Contrast Agent
Plastic Syringe





OptiStar® Elite INJECTOR PEDESTAL

Injector in pedestal version

Reference	QTY/Box
M5200 214727	1
M5600** 234842**	



ADAPTER STARCLIP

Adapters for prefilled syringes 10/15/20mL*

Reference	QTY/Box
814735S 236900	1



SYRINGE

1 syringe + 1 spike

Reference	QTY/Box
801801B 234159	50



OptiStar® Elite INJECTOR CEILING-MOUNT

Injector in ceiling mount options:
- long column
- ceiling track mount

Reference	QTY/Box
M5400 230943	1
M5700** 234844**	



ADAPTER DOTACLIP

Adapters for prefilled syringes 10/15/20mL*

Reference	QTY/Box
802930S 230945	1



Y-TUBING

Single check valve Y-tubing 230cm

Reference	QTY/Box
801107B 234157	100



OptiStar® Elite INJECTOR MOBILE-MOUNT

Injector in floor mount for mobile / ambulatory unit*

Reference	QTY/Box
M5300 225877	1
M5800** 234866**	



MULTIPAK-OPTISTAR

2 syringe + Y-tubing 1 valve + 2 spikes

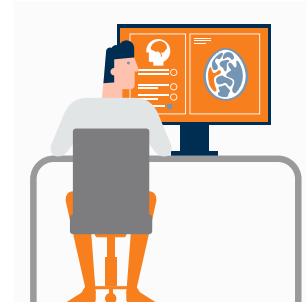
Reference	QTY/Box
801800B 234158	50



Y-TUBING

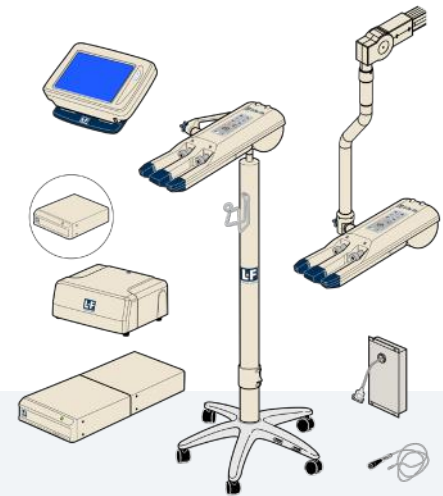
Single check valve Y-tubing 150cm

Reference	QTY/Box
801106 223374	100



Injection Management Solution

Ask your Guerbet Representative



TECHNICAL SPECIFICATIONS

Flow Rate

A Side

- ▶ 60 mL syringes: 0.1–10.0 mL/sec
- ▶ 10, 15, 20, 30 mL syringes: 0.1–8.0 mL/sec

B Side

- ▶ 60 mL single-use disposable syringes: 0.1–8.0 mL/sec
- ▶ 125 mL prefilled saline syringes*: 0.1–8.0 mL/sec

Volume

A Side

- ▶ 10, 15, 20 mL syringes: 1 mL to 20 mL
- ▶ 60 mL syringes: 1 mL to installed syringe size

B Side

- ▶ 60 mL syringes: 1 mL to installed syringe size
- ▶ 125 mL prefilled saline syringes*: 1 mL to installed syringe size*

Number of Phases

- ▶ 6 including Timing Bolus® feature

Phase Delay

- ▶ 0–600 seconds + pause

Number of protocols

- ▶ 40

Inject History

- ▶ Last 48 completed injections

Pressure Limit

- ▶ 60 mL empty syringes: 150 psi
- ▶ 10, 15, 20 mL prefilled syringes: 200 psi*
- ▶ 125 mL prefilled saline syringes: 150 psi*

Syringe Sizes

- ▶ 60 mL empty syringes
- ▶ 10, 15, 20 mL prefilled syringes*
- ▶ 125 mL prefilled saline syringes*

Scan Delay

- ▶ 0–60 seconds

Inject Delay

- ▶ 0–300 seconds

MR Compatibility

- ▶ Up to 1.5 & 3 Tesla

*Presentations may differ from country to country. For complete information please refer to the local Summary of Product Characteristics

**Injector version with new power supply

OptiStar® Elite

MR CONTRAST DELIVERY SYSTEM

Optistar Elite Contrast Delivery System is a medical device intended for use by qualified healthcare professionals. It is intended to inject MR contrast media and flushing solutions into a patient's vascular system to obtain diagnostic images when used in conjunction with Magnetic Resonance (MR) Imaging equipment. For complete information about precautions and optimal usage conditions, we recommend consulting the instruction for use supplied with the device or by your local Guerbet representative(s). For use only in countries with applicable health authority registrations.

Class IIb/CE. TÜV SÜD 0123. Manufacturer: Liebel-Flarsheim Company LLC EC Rep: Guerbet

OptiStar® Elite Injector consumables are medical devices intended for use by qualified healthcare professionals and designed to be used in the LF contrast injection systems. They contain the contrast and provide the delivery path for the contrast to the patient. The injection systems are designed to inject contrast media into a patient's vascular system to obtain diagnostic images when used with computed tomography (CT), MR, Angiographic or x-ray equipment. For complete information about precautions and optimal usage conditions, we recommend consulting the instruction for use supplied with the device or by your local Guerbet representative(s). For use only in countries with applicable health authority registrations.

Class IIa/CE

Manufacturer: Liebel-Flarsheim Company LLC. EC Rep: Guerbet. - TÜV SÜD 0123

Manufacturer: Shenzhen Boon Medical Supply Co., Ltd. EC Rep: Wellkang Ltd. - TÜV RHEINLAND 0197

Contrast&Care® is a medical device intended for use by healthcare professionals only. It allows imaging centers to collect, archive, view and share patients' injection data, including data concerning contrast products, adverse events, injector activity, data on the estimated eGFR and other pre-exam alerts, such as previously reported allergies. Contrast&Care® also provides options to review protocols, create protocol libraries, and visualize analytics data and trends relating to injection activity and contrast product usage. For complete information about precautions and optimal usage conditions, we recommend consulting the instruction for use supplied with the device or by your local Guerbet representative(s). For use only in countries with applicable health authority registrations.

Class I/CE.

Manufacturer: MEDEX

France Distributor: Guerbet, (Roissy CdG cedex, France) tel: +33 (0)1 45 91 50 00 www.guerbet.com - www.contrastncare.com

OptiStar® Elite, Contrast&Care®, Patency Check®, Timing Bolus® & OptiProtect™ are trademarks of Guerbet.

Issued patents. © Copyright 2015 Guerbet - All rights reserved.

Guerbet | 

GUERBET - BP 57400
95943 Roissy Charles de Gaulle Cedex - France
Tel.: +33 (0) 1 45 91 50 00 - Fax: +33 (0) 1 45 91 51 99



www.guerbet.com